



**Océ**

Client Tools™  
software

version 2.3

# Getting Started Guide



## Overview

Océ Client Tools™ software is a free collection of file processing and printing utilities for designers and engineers. The tools allow you to batch-process AutoCAD® DWG®, DWF®, PDF, and other file types and preview them exactly as they will be printed. You can then submit the print-ready job locally to Océ Repro Desk® Studio or remotely for printing on any device that is enabled with Océ Repro Desk Professional or Select software. This *Getting Started Guide* explains when and how to use each tool, and describes the destinations to which you can submit digital print jobs.

## Getting Started

Océ Client Tools software can be installed from a CD or from a Web download. The software's installer detects whether AutoCAD® software is present and installs the appropriate tools. You can run various tools from a desktop icon, from the Windows® Start menu, or from the AutoCAD toolbar. You can also initiate printing by selecting LDF or PDF files in a Windows directory and selecting Océ Print from the right-click menu.

## Technical Support

If you need assistance, begin by utilizing the software's Help menu. Online support is also available on the [Océ Technical Service and Support](#) website.

If you use Océ Client Tools software for local printing, contact your CAD Manager or IT Manager for further assistance. If your reprographer provided you with Océ Client Tools software, contact your reprographer for additional support.

### Description of Océ Client Tools software

The Océ Client Tools software installation contains the following utilities:

#### Océ Publisher

This utility enables you to batch-process multiple file types\* into a print-ready format and preview them. You can then predetermine output options and submit the files to any available destination.

#### Océ LDF Driver for AutoCAD

This AutoCAD HDI driver enables you to convert a DWG file into a print-ready format and preview it. You can then submit the file to any available destination.

#### Océ LDF Writer for Windows

This is a standard Windows printer driver that enables you to convert a file from any Windows application into a print-ready format and preview it. You can then submit the file to any available destination.

#### Océ PDF Writer for Windows

This printer driver enables you to convert a small-format multi-page file from any Windows application into PDF and then submit the file to any available destination.

#### Océ Document Viewer

This utility enables you to preview and manipulate Océ LDF (Layered Document Format) files from within Windows Explorer®.

*\*Supported file formats: AutoCAD DWG (requires AutoCAD 2000-2008), DWF, HPGL, HPGL2, CALS, TIFF, CalComp, BMP, JPG, PNG, VIC, JOB, and LDF. PostScript®, PDF, and other file formats can be supported using third-party converters.*

# Using Océ Publisher

To prepare and submit files with Océ Publisher, use the toolbar buttons from left to right.

## 1. Add files

Select files to print and click Open. Change properties on the Paper Settings, AutoCAD Options and Sheet Details tabs as necessary.



## 2. Process files

Process files into a print-ready format in black-and-white or color. Respond to any prompts as necessary.



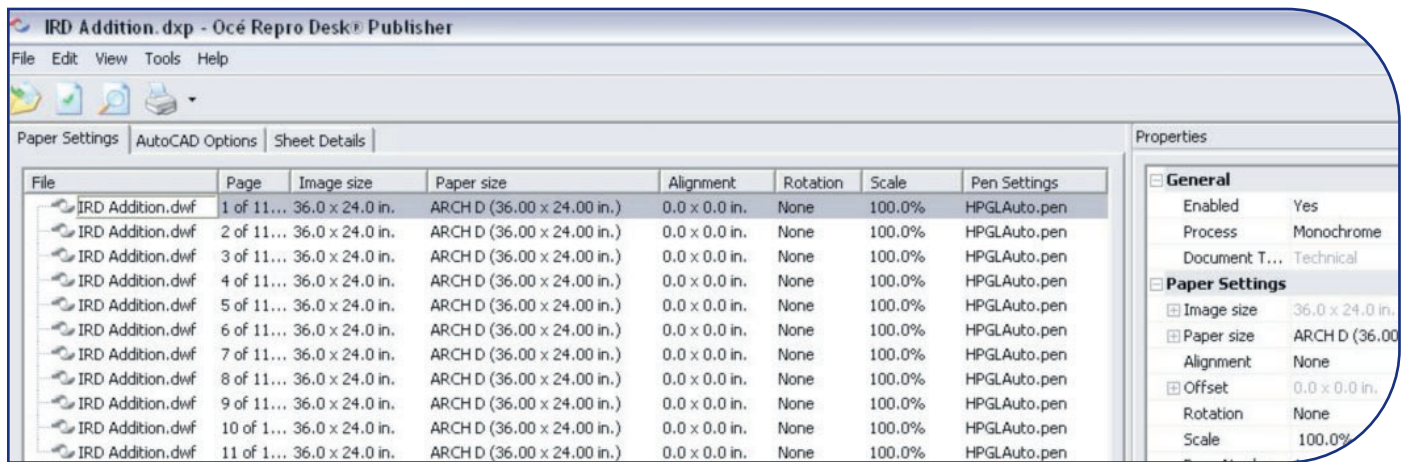
## 3. Preview files

Preview files in the document viewer. Use the viewer toolbar buttons to Fit Window, Zoom, Move or Pan.



## 4. Submit files

Use the Océ Print button to submit files to any supported destination. See page 4 for more details.



## Editing file properties

You can edit file properties several different ways:

- Edit a property for one or more files by selecting the file(s), right-clicking on a data field in the file list grid, and choosing the desired setting from the list.
- Set the same property for all files on the list by right-clicking the column header and choosing the desired setting from the list.
- Apply a property from one file to other files on the list by right-clicking the data field and selecting Copy Down or Copy All.
- Edit a property for one or more files by selecting the file(s) and clicking directly on a data field in the Properties dialog box. To open the Properties dialog, select it from the View menu.

## Working with a print set

The file list is displayed in print sequence from top to bottom. You can change the print sequence using drag-and-drop. Multi-selection of files is supported for re-sequencing, processing, viewing, and printing. Undo and Redo functions are supported as well as Cut, Copy, and Paste using the Edit menu. You can right-click on an individual filename for a menu of additional options.

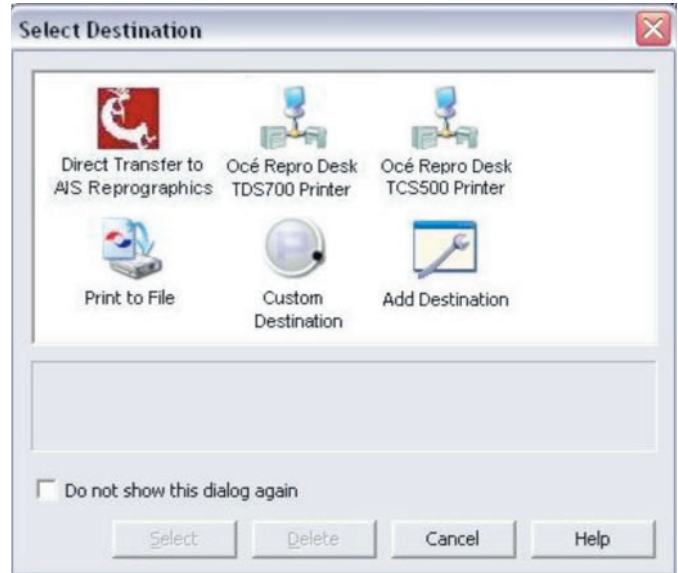
## Submission Destinations

Océ Client Tools software can be configured to submit files to several different local and remote destinations. The availability of a specific destination depends on your needs, the capabilities of your printer or reprographer, and the version of the software that you are using. Click the Océ Print toolbar button to open the Select Destination dialog box. Supported destinations include:

- **Océ repro Desk Professional, Select or Studio Job Center**  
Submit files to the Job Center inbox of an Océ repro Desk Professional system that is on the local network.
- **Direct Transfer**  
Submit print orders directly to your reprographer using this secure HTTP method. Contact your reprographer for set-up instructions.
- **Custom Destination**  
Submit files to a remote printer by defining a custom script to utilize FTP, email or another submission method.
- **Print to File**  
Use this option to create print-ready LDF files and save them to a local Windows network directory for future printing.
- **Océ Plan Center Digital Plan Room**  
Some versions of Océ Client Tools software can publish files to an online plan room. If your reprographer is an Océ Plan Center Authorized Host, request their customized version of Océ Client Tools software.

### Set a default destination

You can set a default destination by choosing an icon and selecting the “Do not show this dialog again” check box. This will bypass the Select Destination dialog for future printing. You can reopen the Select Destination dialog by clicking the arrow next to the Océ Print toolbar button.



### Add a new destination

You can add a destination icon to the Select Destination dialog box by double-clicking the Add Destination icon, selecting the destination type and configuring the new destination.

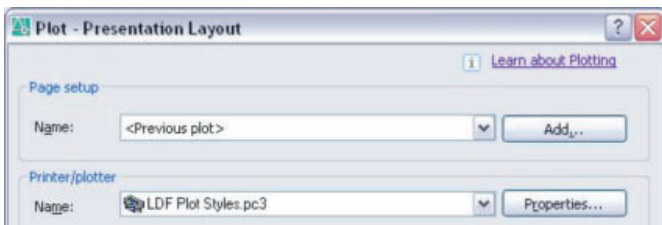
### Check-plot to a Windows printer

You can use Océ Publisher to print to a local Windows system printer. The maximum output size is 11" × 17." On the File menu, point to Windows Print and select Print from the fly-out menu. This will open the Print dialog. Choose a Windows printer from the drop-down list and click OK.

# Using Other Océ Client Tools

## Océ LDF Driver for AutoCAD

1. In AutoCAD (2000–2010), select Plot from the File menu.
2. In the Printer/Plotter drop-down list, select the appropriate LDF driver. Use “LDF Pen Sets.pc3” if you use Océ Repro Desk pen sets or use “LDF Plot Styles.pc3” if you use the AutoCAD plot style tables.
3. Choose your desired settings in the Plot dialog box.
4. Click the Preview button to view the drawing.
5. Close the preview window and click OK.
6. In the Browse for Plot File dialog, choose your preferred directory and click Save.

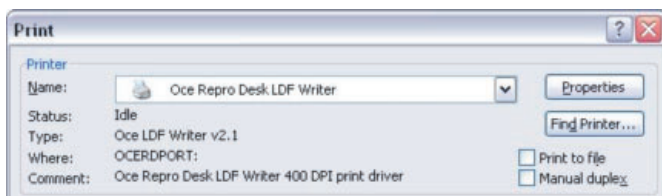


*Note: You can configure custom properties for the Océ LDF Driver for AutoCAD. After step 2 above, click the Properties button. On the Device and Document Settings tab, click Custom Properties. Under Access Custom Dialog, click the Custom Properties button. Make changes on the Plot Options tab and the Information tab.*

## Océ LDF/PDF Writer for Windows

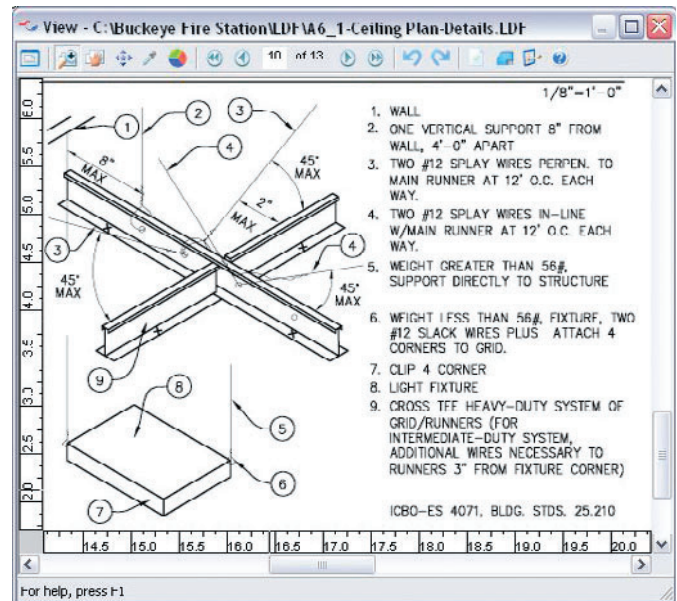
You can produce wide-format LDF documents using the Océ LDF Writer for Windows. You can produce small-format multi-page PDF specification documents using the Océ PDF Writer for Windows.

1. In any Windows application, select Print from the File menu.
2. In the Printer drop-down list, select Océ LDF Writer or Océ PDF Writer.
3. Click Print.
4. Select a destination.



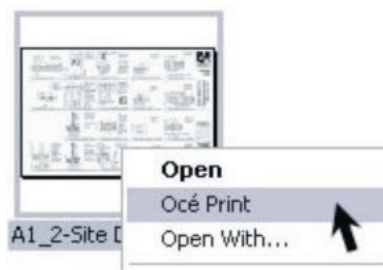
## Océ Document Viewer

You can open the Océ Document Viewer by double-clicking an LDF file in a Windows directory. You can also launch the viewer from the Start menu by selecting All Programs, then Océ, then Océ Client Tools, and then Océ Document Viewer. Adjust the view using the toolbar buttons. To submit the file, click the Océ Print button and select a destination.



## Windows Explorer extensions

You can see thumbnail images of LDF files by selecting Thumbnails on the View menu in Windows Explorer. To submit LDF or PDF files for printing, select the file(s), choose Océ Print from the right-click menu, and select a destination.





## Océ Client Tools Software Tips and Tricks

- Océ Publisher can produce print-ready files in color or monochrome. Use the Process property of a file to choose your preference. You can also submit files unprocessed by choosing On Server in the Process property.
- You can save a print-ready set of LDF files for future printing by choosing “Save DXP As” from the File menu. If any underlying DWG files are modified, when you reopen the DXP file and reprocess the LDF files, the print set will be updated automatically.
- Users of MicroStation® software can produce print-ready LDF files using the Océ LDF Writer for Windows, or by specifying a third-party DGN converter in the File Processing options.
- Océ Publisher supports .job files from legacy versions of Océ Repro Desk using the Import Job option on the File menu.
- You can create custom digital stamps and apply them to prints using the Stamp Editor from the Tools menu in Océ Publisher.
- Océ Publisher supports custom paper sizes as well as folding. Select Options from the Tools menu to review all of the available options and information.
- Océ Publisher supports PostScript and PDF file processing using external software. You can specify a converter such as GhostScript® in the File Processing options.
- You can use Océ Publisher to print to local wide-format devices or remotely if enabled with Océ Repro Desk Professional, Select or Studio. Contact Océ for more information.

# Beyond the Ordinary



## Printing for Professionals

Océ helps the people who make our world. Companies everywhere use Océ high-speed printing, technical documentation, and professional document systems to keep the wheels of business, industry and government turning. Océ also helps the world. Developing products and services that add value to the document processes of our customers, while minimizing environmental impact and protecting health and safety, has always been one of our core principles. From bank statements to utility bills, from blueprints to newspapers, from on-demand documents to wide-format display graphics, Océ helps our professional customers go "Beyond the Ordinary" in print and document management.

### Océ North America

Océ Wide Format Printing Systems  
5450 North Cumberland Avenue  
Chicago, Illinois 60656  
1-800-714-4427  
1-773-714-4076  
Fax 1-773-714-4056  
email: [us.info@oce.com](mailto:us.info@oce.com)

Océ-Canada, Inc.  
4711 Yonge Street, Suite 1100  
Toronto, Ontario, M2N 6K8  
Canada  
1-800-668-1945  
Fax 1-416-224-5778  
email: [info.ca@oce.com](mailto:info.ca@oce.com)

Océ Mexico, S.A. de C.V.  
Ave. Pol. Paseo de la  
Reforma No. 1236 Piso 4  
Mexico City, DF 05348  
52-55-5089-8700  
email: [mex.info@oce.com](mailto:mex.info@oce.com)

© 2009 Océ. Illustrations and specifications do not necessarily apply to products and services offered in each local market. Technical specifications are subject to change without prior notice. The Océ logo, "Océ," and "Repro Desk" are registered trademarks of Océ-Technologies B.V. "Client Tools" is a trademark of Océ-Technologies B.V. "Explorer" and "Windows" are registered trademarks of Microsoft Corporation. "AutoCAD," "DWF," and "DWG" are registered trademarks of Autodesk, Inc. "Postscript" is a registered trademark of Adobe Systems, Inc. "MicroStation" is a registered trademark of Bentley Systems, Inc. "Ghostscript" is a registered trademark of Aladdin Enterprises. All other trademarks are the property of their respective owners.

For information and services, visit us at:  
**[www.uceusa.com](http://www.uceusa.com)**