



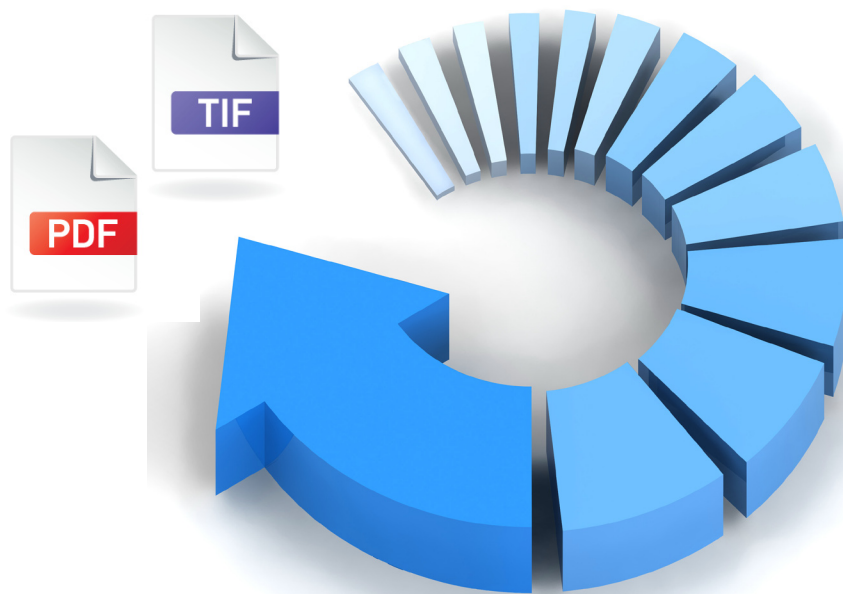
**KIP PC Based App:**  
**KIP Switch**



# Welcome to KIP Switch

## Let's Take a Look at Some Key Features...

This advanced Batch Converter does exactly what its title suggests, allowing you to easily convert multiple print files at the click of a button. Developed from KIP's latest PrintNET technology, KIP Switch's functionality and easy-to-use interface makes file conversion quick, easy, and accurate.





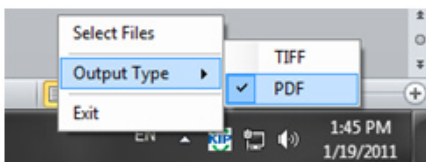
Install KIP Switch



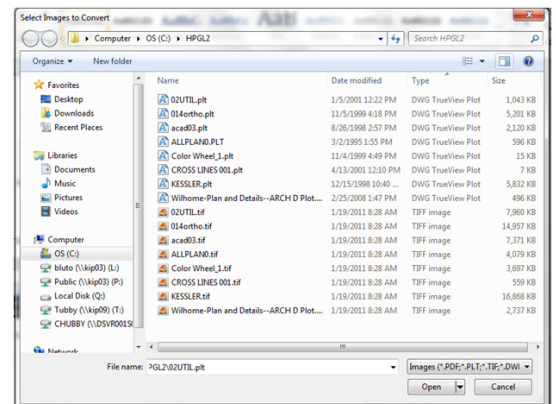
Right-click on KIP Switch in the task tray



Select output file type (TIFF or PDF)



Select files for conversion



Select save file location

