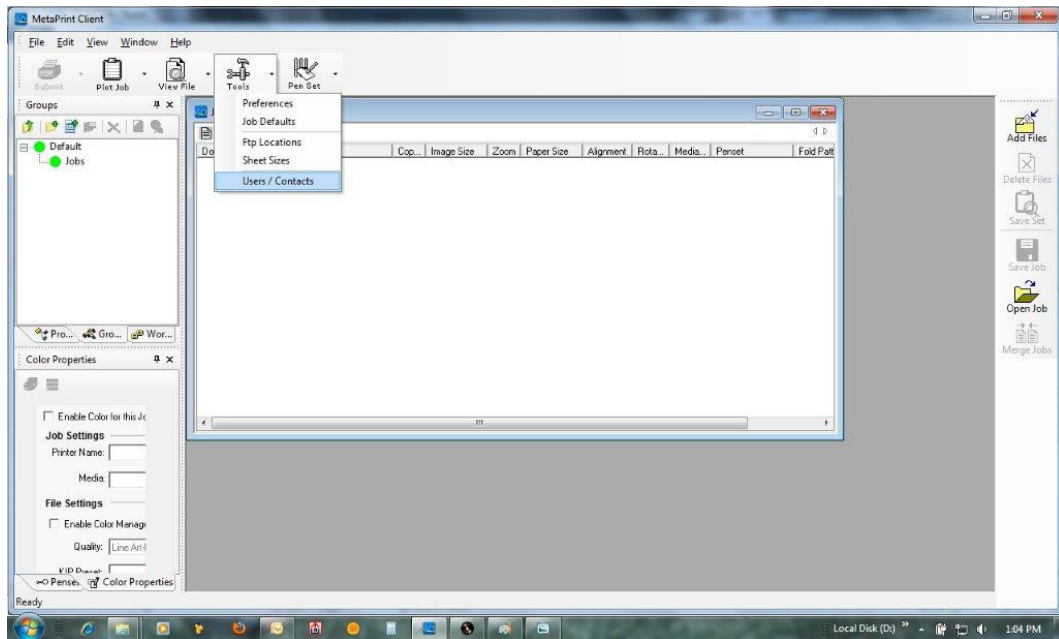
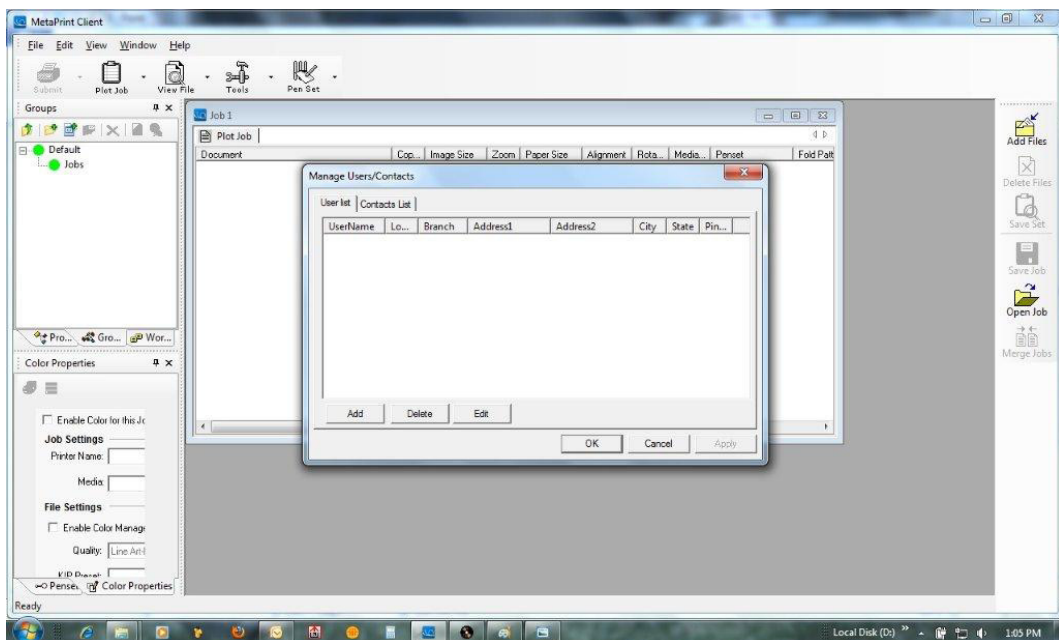


MetaPrint Client User Configuration

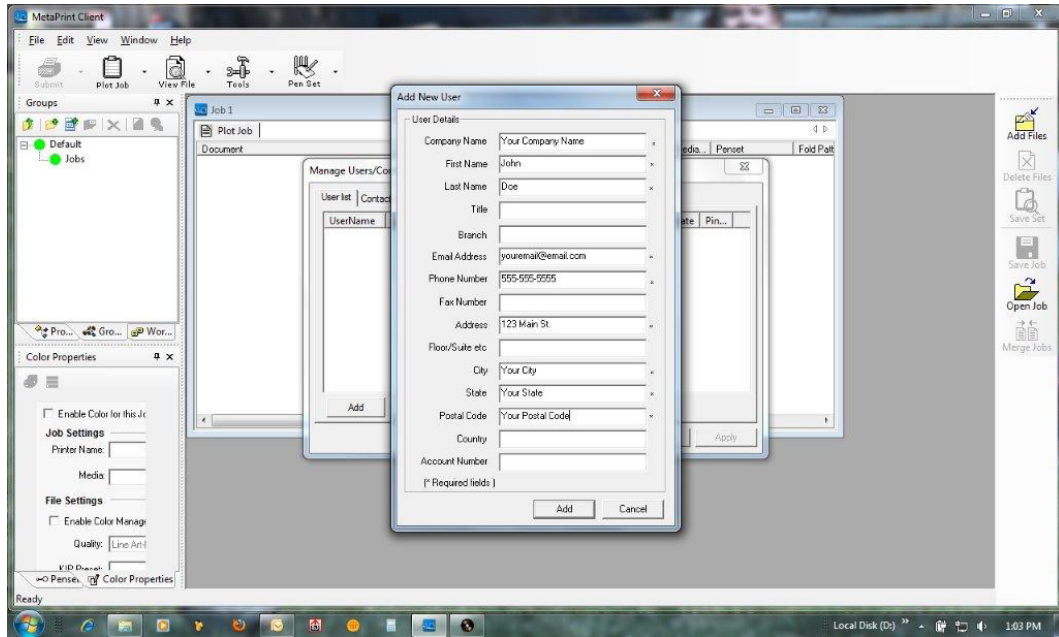
Step 1 - Open MetaPrint Client. Select Tools > Users/Contacts.



Step 2 - You will now see the Manage Users/Contacts Screen. Click "Add".



Step 3 - Fill in All Required User Fields (marked by *). Click "Add" when complete.



Step 4 - Click "OK". User Configuration is now complete.

