

# Field Supply Catalog

2026



PRINT-O-STAT



## Before You Browse



The products found within this catalog is just a small sampling of what we offer. Partnered with the world's leading manufacturers, Print-O-Stat provides the highest quality of commercial grade equipment, supplies, tools, and accessories to support your business.

## Schedule A Demo



Nobody knows your business better than you. When it comes to acquiring new technology, you want to get the most out of your investment. Scheduling a free consultation or demo will allow our specialists to understand your needs and match you with the best solution to position your business for growth.

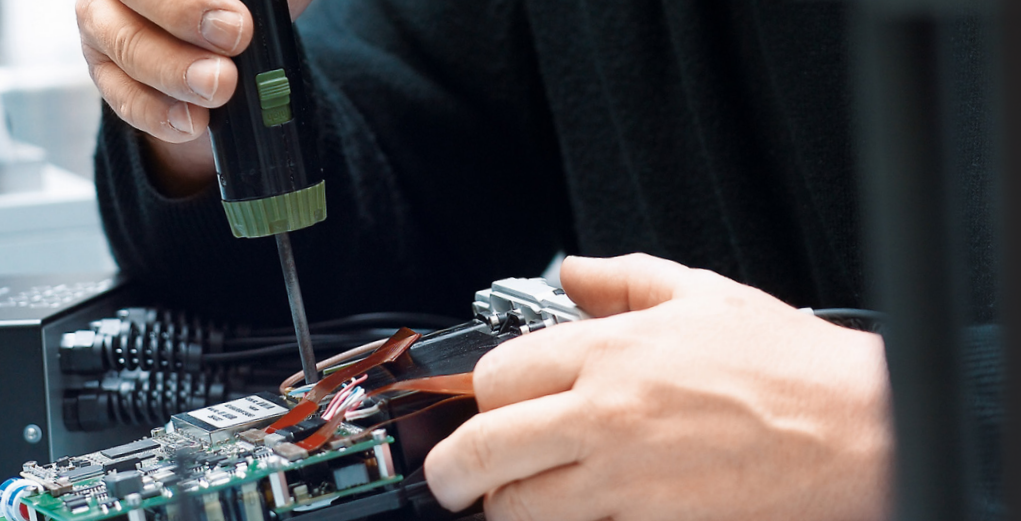
## Get In Touch



With 11 locations throughout PA, MD, and VA - it is easy to connect with us. At each branch, you can conveniently shop our supply wall and/or speak with our friendly office staff to get the product(s) you need.

In the field or office? Call at **1-800-811-9889**, email [survey@printostat.com](mailto:survey@printostat.com), or visit us at [printostat.com](http://printostat.com).





## Equipment Cleaning, Repair, and Calibration Services

Print-O-Stat's experienced and manufacturer authorized repair technicians provide quality workmanship that ensures the accuracy and reliability you require in the field. Our quick turnaround time means less down-time and loss of production, saving your bottom line.

Featuring:

- Manufacturer Authorized Repair Technician
- Pick up and drop off service
- Rental units available while your instrument is being repaired
- MOST REPAIRS are done in-house
- WARRANTY service is available

To request service, call **1-800-811-9889**, email [survey@printostat.com](mailto:survey@printostat.com) or visit your local Print-O-Stat branch.



## Equipment Rentals

Want to try out equipment prior to committing to a purchase? Did your equipment break in the middle of a job? Do you need a specific instrument for a job, but will not use in the future?

**Renting may be the answer for you.**

Print-O-Stat is pleased to offer our customers a variety of surveying equipment rentals, including:

- 3D Laser Scanners
- Laser Levels
- Robotic Total Stations
- Data Collectors
- GPS/GNSS Equipment
- and Much More!

By renting equipment, you can:

- Accept projects requiring tools you do not currently own
- Test equipment before buying to ensure it is right for you
- Avoid the high costs of ownership and maintenance

**Special offer:** If you purchase your rented equipment from Print-O-Stat within 30 days after your rental period ends, we will apply your rental fee toward the purchase price.

# Find A Print-O-Stat Branch Near You

### York, PA (Corporate Office)

1128 Roosevelt Avenue, Suite 100  
York, PA 17404  
717.854.7821 fax 717.846.4084

### Allentown, PA

1045 Union Boulevard  
Allentown, PA 18109  
610.437.0797 fax 610.439.8865

### Chantilly, VA

14301 Sullyfield Circle, Ste D  
Chantilly, VA 20151  
703.378.3174 fax 703.378.3175

### Cockeysville, MD

10540 York Road, Ste I  
Cockeysville, MD 21030  
410.527.0844 fax 410.527.0689

### Cranberry Township, PA

230 Executive Drive, Ste 108  
Cranberry Township, PA 16066  
724.742.9811 fax 724.742.9816

### Hanover, PA

707 Third Street  
Hanover, PA 17331  
717.637.1655 fax 717.637.7274

### King of Prussia, PA

489 Shoemaker Road, Bldg B, Ste 109  
King of Prussia, PA 19406  
610.265.5470 fax 610.265.6448

### Lancaster, PA

1741 Rohrerstown Road  
Lancaster, PA 17601-2352  
717.581.6680 fax 717.581.5224

### Linthicum, MD (BWI)

811 Pinnacle Drive, Ste A-B  
Linthicum, MD 21090  
410.788.3644 fax 410.788.0572

### Mechanicsburg, PA

5040 Louise Drive, Ste 110  
Mechanicsburg, PA 17055  
717.795.9255 fax 717.795.9259

### York, PA (East York)

2300 East Market Street  
York, PA 17402  
717.757.5554 fax 717.755.2477

# WAYS TO ORDER



Call a Print-O-Stat Geospatial Solutions Product Specialist at **800.811.9889** (8AM - 5PM Eastern Time)



Email your order to [survey@printostat.com](mailto:survey@printostat.com)



Order Online from our website at [www.printostat.com/shop-all-products](http://www.printostat.com/shop-all-products)



**PAYMENT TERMS:** Payment is due in full upon acceptance of an order by Print-O-Stat. Print-O-Stat will make an attempt to stock sufficient inventory; however, we shall reserve the right to ship partial shipments and customer agrees to pay for each partial shipment upon receipt. Our prices do not include shipping expenses and are subject to change without advance notice. We accept orders on open account, Visa, Mastercard, Discover and American Express.

**PRICING:** Prices are subject to change without notice

**RETURN POLICY:** Print-O-Stat OFFERS A THIRTY (30) DAY RETURN POLICY. Print-O-Stat reserves the right to deny returns. Under certain circumstances there may be restocking fees ranging from 20% to 50% placed on orders. It is our policy to require RMAs for any returns.

The information provided by Print-O-Stat is believed to be accurate; however, Print-O-Stat expressly disclaims any representation or warranty, express or implied, concerning the accuracy or completeness of any information contained, or products or services provided, herein. We advise that persons accessing information in this catalog have the sole responsibility for how this information is used and understand and agree that Print-O-Stat is not responsible or liable for any claim arising from the use of the information.

**PHOTO CREDIT:** All pictures contained in this catalog belong to their rightful owner. Print-O-Stat does not claim ownership over images used.

**\* Prices are subject to change without notice**



# TABLE OF CONTENTS

3D Cameras	10
Bags and Cases	20
Batteries	7
Data Collectors	7
Drones	8
Field and Level Books	27
GPS	6
GPS / GNSS Applications	6
GPS Poles & Accessories	14
Hand Levels	12
Hand Tools and Accessories	26
HD Laser Scanners	8
Leveling Rods	13
Magnetic Locators	33
Marking Products	30
Measuring Tapes	25
Measuring Wheels	24
Plumb Bobs and Accessories	23
Prism Poles and Accessories	15
Prisms and Prism Assemblies	19
Robotic Total Stations	6
Safety Products	29
Scale Masters & Calculators	34
Survey & Construction Instruments	10
Tribrachs	22
Tribrach Adaptors	22
Tripods	11

## Carlson CRx Robotic Total Station - 1", 2", 3", and 5"

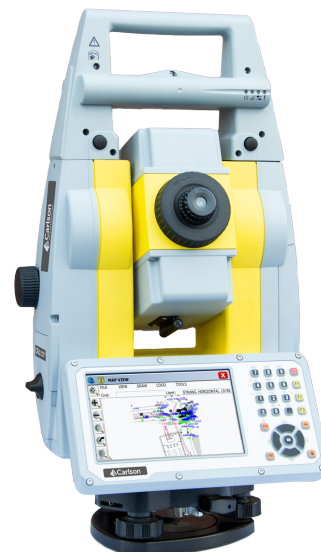
The Carlson CRx series of Robotic Total Stations provides a choice of angular resolutions to match the application requirements.

The CRx1", CRx2" and CRx5" all feature the same technologies for a seamless user experience. The instruments are combined with SurvCE or SurvPC on a field computer to access the full range of Carlson survey features for efficiency and automation in a familiar environment. In addition, users have the option of installing SurvPC Basic on board for operation with the instrument only.

CRx Robotic Total Stations are used with SurvCE or SurvPC in a wide range of applications requiring precise angle and distance measurements such as surveying, engineering and construction.

- X-MOTION Hybrid Drives
- Scout: Quickly search for passive prisms
- Full Connectivity
- Robust, field-proven package
- accXess EDM Technology
- 1, 2, 3 and 5 second options

For more information, or to download the datasheet, [visit printostat.com](http://www.printostat.com)



[Contact us for pricing](#)

## GPS / GNSS Applications

### Carlson BRx7 GNSS Receiver\*

The BRx7 is Carlson's multi-GNSS smart antenna delivering high precision and tilt compensation in a rugged, compact design. It functions as a network rover with VRS or as a base-rover system using internal UHF radio or cellular via Carlson's Listen-Listen cloud service, supporting multiple simultaneous rover connections with no baseline restrictions.

- GPS, GLONASS, BeiDou, Galileo, QZSS
- Tilt-compensation with quick initialization
- Hot-Swap Lithium-Ion Battery
- 4G Penta Band LTE Modem
- On-board Web UI
- Wi-Fi 802.11 b/g/n
- Bluetooth 2.1 + EDR
- 8 GB Internal Memory

For more information, or to download the datasheet, [visit printostat.com](http://www.printostat.com)



[Contact us for pricing](#)

### Carlson Viking GNSS Receiver\*

The Carlson Viking is a GNSS receiver for precision positioning in difficult environments, used as either a base or a rover, featuring a best-in-class GNSS antenna element and integrated IMU for centimeter-level accuracy, flexibility, durability, and self-calibrating tilt compensation.

- GPS, GLONASS, BeiDou, Galileo, QZSS, NavIC (IRNSS); 632 channels
- Dual GNSS RTK modules, 3 RTK engines, multi-frequency
- 4G cellular modem and UHF radio for RTK data transmission
- Gama RTK navigation engine with RTK Triple-Fix technology
- Two long-life lithium batteries, up to 10+ hours operation, hot-swappable, USB-C charging
- Wi-Fi, Bluetooth, cellular modem, UHF radio (400 and 900 MHz)

For more information, or to download the datasheet, [visit printostat.com](http://www.printostat.com)



[Contact us for pricing](#)



## Carlson RT4+ Ruggedized Tablet



[Contact us for pricing](#)

The Carlson RT4+ is a ruggedized Windows tablet designed for surveying, stakeout, construction layout, and GIS mapping, bundled with Carlson's SurvPC so you can collect, analyze, and use your data in the field and office.

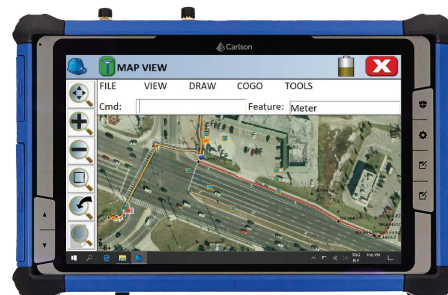
- 16 GB RAM and 256 GB flash/PCIe SSD storage, plus MicroSDXC slot
- Long-range Smart Ready Bluetooth, Wi-Fi 6/6E, and USB-A/USB-C connectivity
- 4G LTE ready for RTK Mobile and other carriers
- High-performance GNSS receiver (2–5 m typical accuracy, SBAS support, 135 channels)
- Large 7-inch IllumiView high-visibility display, optically bonded capacitive touch screen
- IP68 dustproof and waterproof; tested to MIL-STD-810 rugged standards
- 13 MP rear camera with LED illumination and 5 MP front camera with geotagging

For more information, or to download the datasheet, [visit printostat.com](#)

## Carlson RT5+ Ruggedized Tablet

The Carlson RT5+ is a ruggedized Windows data collector designed for surveying, stakeout, construction layout and GIS mapping, and is bundled with Carlson SurvPC – the Windows-based data collection program. Optionally, the RT5+ can run SurvPC with Esri OEM for use in the field. With the new 3-year NO-FAULT warranty you are protected from the unforeseen, and with 16GB of RAM and 512 GB of storage, you can collect and analyze your data quicker than ever before.

- Powerful Windows 11 for office-to-field use
- Operates in extreme temperatures from 14F to 122F (-10° C to 50° C)
- Dustproof & water resistant (IP65 rating)
- All-day battery runs 10+ hours for minimal downtime



[Contact us for pricing](#)

For more information, or to download the datasheet, [visit printostat.com](#)

## Carlson Batteries



Model	Description	Price
8030-060-005	1 XS Series BP-5S Battery	\$140.00

Model	Description	Price
8040-058-010	ZBA400-Li-Ion Battery 4.4Ah rechargeable	\$280.00



## Leica Batteries



Model	Description	Price
971702	GEB 222 Battery Li-Ion 7.2V / 5800 MAh	\$395.00

Model	Description	Price
772806	GEB 212 Battery Li-Ion 7.4V / 2.4 Ah	\$245.00



Pictured with LiDAR attachment



[Contact us for pricing](#)

## Carlson CRD1 Drone

The Carlson CRD1 is an American-made sUAS platform supporting LiDAR, photogrammetry, bathymetry, or custom payloads up to 20lbs. Designed for surveying, construction, engineering, mining, and land development professionals requiring precise aerial data collection. Process acquired data in Carlson PhotoCapture and Point Cloud Advanced for maps, surface models, volumes, profiles, and more.

- Flight time: ~20–45 minutes (varies with payload and weather conditions)
- Control range: ~9 miles / ~15 km
- Max speed: 50 mph / 72 km/h
- Dust & water-resistant
- FPV Camera

For more information, or to download the datasheet, [visit printostat.com](#)

## Autel Drone

The Autel EVO II Pro RTK is an advanced aerial platform for high-accuracy imagery in surveying, construction, engineering, mining, quarry, land development, and related industries, and becomes a powerful companion to traditional instruments when bundled with Carlson PhotoCapture and Point Cloud Advanced.

- 20 MP 1-inch sensor camera on 3-axis gimbal
- Internal 8 GB storage plus SD card support up to 256 GB
- Up to 36-minute flight time with level 8 wind resistance (about 39–46 mph)

For more information, or to download the datasheet, [visit printostat.com](#)



[Contact us for pricing](#)

# HD Laser Scanners

## Leica BLK360

The Leica BLK360 revolutionizes reality capture with industry-leading scan speeds, completing full spherical scans in just 20 seconds. Perfect for professionals seeking fast, accurate 3D scanning with seamless workflow integration.

- 20-second full spherical scanning with imaging
- Real-time mobile device feedback
- Automatic scan combination with VIS technology
- Direct cloud upload via Reality Cloud Studio
- Multi-language support



[Contact us for pricing](#)

## Z+F Imager® 5024

The Z+F IMAGER® 5024 is a professional-grade 3D laser scanning system that combines high-speed data capture with extended range capabilities, advanced positioning sensors, and an integrated touchscreen controller.

- 2,200,000 Pixels/Second
- Up to 150m Range
- Laser Class 1
- 5.7" Touchscreen Interface
- 256 GB Internal Storage
- IMU Positioning
- Wi-Fi 802.11 a/n/g (up to 240 Mbits/s)
- Z+F TopCam RGB Camera



[Contact us for pricing](#)

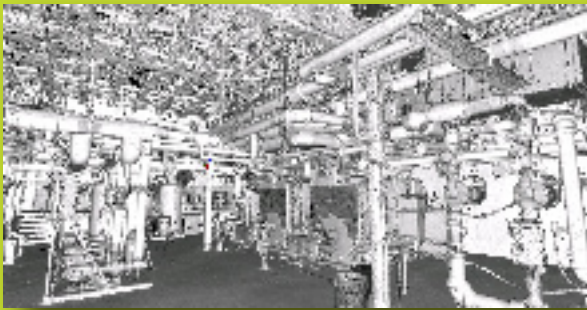


# LiDAR Scanning & Modeling

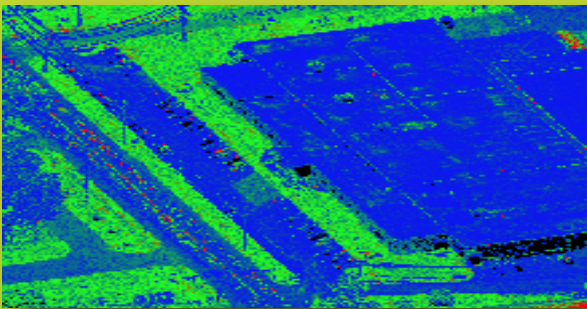
## Your Partner for Enhanced Project Success!

With our scanning & modeling services you can expect:

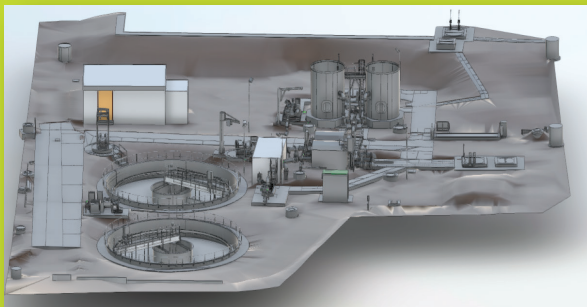
- Highly Detailed and Accurate Data
- Reduced Field Time and Costs
- Accurate Representation of Real-World Conditions
- Improved Design and Planning
- Better Collaboration and Coordination



Terrestrial LiDAR Scanning Services



Aerial LiDAR Scanning Services



Revit and Plant 3D model deliverables created from your point data



**Schedule a consultation or demo now!**

## Matterport Pro3 Camera

This powerful LiDAR camera revolutionizes spatial mapping with cutting-edge technology, bringing any space into the virtual world with unprecedented precision and speed. Designed for professionals and researchers, it captures detailed 3D representations of environments with remarkable accuracy down to approximately 20 millimeters.

- Highest accuracy scans down to ~20mm using advanced LiDAR technology
- Fast 20-second scanning time per capture
- Extensive range from 20 to 100 meters, suitable for indoor and outdoor spaces

Ideal for technical projects requiring exceptional spatial documentation

Perfect for architectural surveys, industrial design, research applications, and complex technical projects, this LiDAR camera transforms physical spaces into comprehensive digital models quickly and efficiently. Its versatile capabilities make it an essential tool for professionals who demand precise and rapid spatial mapping.

For more information, or to download the full technical datasheet, [visit printostat.com](https://www.printostat.com).



[Contact us for pricing](#)

## Survey and Construction Instruments

### Sokkia B20/30/40 Automatic Levels\*



[Contact us for pricing](#)

Sokkia's B series automatic levels represent a pinnacle of precision engineering, delivering exceptional performance across diverse environmental challenges. These sophisticated surveying instruments feature an advanced compensator mechanism that sets a new industry standard for accuracy and reliability, with meticulously designed telescopes providing surveyors and engineers with bright, crisp views for precise measurements.

- The B20 model offers a 32x magnification telescope with 2.0mm accuracy
- The B30 features a 28x telescope with improved precision
- The B40 model provides a 24x telescope with an extraordinary 0.7mm accuracy

Each model is carefully calibrated to meet the rigorous demands of professional surveyors and construction professionals who require consistent and reliable measurement tools. Built with durability in mind, these instruments can withstand challenging jobsite conditions, from extreme temperatures to dusty environments.

### David White AL8-26/32

The auto level's compensator maintains precise 15-arc-minute accuracy while its large aperture ensures sharp, bright images. High-contrast white-on-black graduations on the horizontal circle provide clear angle measurements. This combination of features makes leveling jobs faster and more accurate across surveying and construction applications.

- 26X or 32X Magnification
- Accuracy up to 1/16" at 100' (1.6mm at 30m)
- Working range up to 325ft (100m)
- Lock out Device: Protects compensator during transport
- Infinite Tangent Screw

The combination of these features and proper maintenance procedures ensures that leveling jobs can be completed more quickly and accurately than ever before. The equipment's durability and precision make it an invaluable tool for any surveying or construction project where accurate leveling is crucial



[Contact us for pricing](#)





## Topcon RL-H5A\*

With great distance and high accuracy, the RL-H5 series is simple to use for checking elevations. With electronic self-leveling, the RL-H5A is simple to use and works in seconds. Shoot up to 400m from your laser with up to 100 hours of continuous usage from 4 D cell batteries.

- Long range operation
- Simple, intuitive manual slope capability, 5 degrees of range
- Up to 100 hours of battery life
- IP66 rating

## Sokkia DT-series Theodolite

The Sokkia DT series theodolites feature superior optics, mechanics, advanced absolute encoder systems, and proven automatic compensators. In addition to these essential technologies for angle measurement instruments, the Sokkia DT series boasts the industry's highest IP66 rating.

- 2.5" telescope
- IP66 dust / water protection rating
- Lightweight
- Standard Lr66/AA batteries
- Up to 170 hours of operating time



## Spectra LL500

The Spectra Precision Laser Level LL500 is a one-person leveling system designed for longer range measurements across your entire site.

- Temperature compensation provides highly stable, repeatable accuracy even under large temperature changes
- One person elevation control w/ 1,650 ft (500m) diameter range
- Alkaline or rechargeable batteries keep the unit working and minimize downtime due to power loss
- Self-leveling with built-in shut off for increased accuracy & reduced errors
- Includes HL700 Digital Readout Receiver & C70 Receiver Clamp



[Contact us for pricing](#)

## Tripods

### Leica GST120-9 Wooden Tripod

Heavy duty self-closing tripod with carrying strap and side clamp screws. Proven long-life, twist-proof and excellent vibration characteristics. Packaged length 3.61 ft, extendable to 5.91 ft. Weight is 14.1 lbs.

Model	Head Type	Open Height	Closed Height	Net Weight	Price
667301	5/8 x 11 Flat	71"	43"	14.1 lb	\$525.00





## Heavy-Duty, Quick Clamp, Aluminum Tripod\*

Lightweight, heavy gauge aluminum with the added stability of double banded legs put this extension leg tripod head and shoulders above the other aluminum tripods. Outstanding features include positive locking clamps, powder painted wear-resistant metal parts and shoulder strap.

Model	Head Type	Open Height	Net Weight	Price
01-ALQR20	5/8 x 11 Flat	64"	10 lb	\$119.00

## Heavy-Duty, Quick Clamp, Hardwood / Fiberglass Tripod\*

An outstanding combination of hard maple legs with fiberglass dowels makes this the most versatile tripod on the market. Our fiberglass dowels are unique to their structural plastic polystyrene core, and will not shrink or swell under changing weather or temperature conditions. This tripod also features powder painted metal parts, double banded extension legs for extra stability and shoulder strap.

Model	Head Type	Open Height	Net Weight	Price
01-WDF20	5/8 x 11 Flat	72"	16 lb	\$191.20



## Premier Fiberglass Tripod

This all-fiberglass tripod features proven tripod design concepts. It's totally waterproof, so longer term setups in adverse weather conditions is not a problem. This tripod employs dual clamps for fast, stable setups. The quick clamps are made of metal with plated friction washers which also contribute to a fast setup. The proven twist-clamp design prevents slipping by binding the sliding leg. It is ideal for all instruments, total stations, robotics, and GPS gear. The tripod cap holds a combination tool that fits all bolts on the tripod.

Model	Head Type	Open Height	Net Weight	Price
90582	5/8 x 11 Flat	70.5"	13.6 lb	\$313.19

# Hand Levels

## Kuker Ranken 572S\*

Kuker-Ranken Hand Levels are hand-finished for smooth and accurate operation with etched glass prisms and precision ground lenses. 5-7 inch 2 power stadia hand level with very sharp field of view and a stadia ratio 1:32. The exterior has a very visible powder coating finish.

Model	Price
572S	\$200.00



All hand levels include a leather carrying case with belt loop and snap flap, parts list and instructions





## CRAIN - SVR Series Surveyor's Leveling Rods

### SVR - Surveyor's Leveling Rods

Model	Description	Sections	Collapsed Size	Price
98010*	SVR 25' 10ths	6	58 1/2"	\$316.28
98011	SVR 25' inches	6	58 1/2"	\$316.28
98015	SVR 25' inches/10ths	6	58 1/2"	\$316.28
98020	SVR 17' 10ths	4	59 1/4"	\$270.68
98021	SVR 17' inches	4	59 1/4"	\$270.68
98025	SVR 17' inches/10ths	4	59 1/4"	\$270.68

## CRAIN - SVR Series Surveyor's Leveling Rods

Crain's durable CR Series are constructed of non-conductive fiberglass and are rectangular in shape with rounded back corners for a better grip. The scale width is graduated to fill the entire face of the rod and the CR's are equipped with stand-off ribs that protect the scale from wear.

### CR - Construction Leveling Rods

Model	Description	Sections	Collapsed Size	Price
92001	CR 8' 10ths	2	52"	\$79.73
92002	CR 8' inches	2	52"	\$79.73
92021	CR 13' 10ths	3	58 3/8"	\$120.70
92022	CR 13' Inches	3	58 3/8"	\$120.70
92041*	CR 16' 10ths	4	56 3/4"	\$177.77
92042	CR 16' Inches	4	56 3/4"	\$177.77
92031	CR 20' 10ths	5	57 5/8"	\$191.88
92032	CR 20' Inches	5	57 5/8"	\$191.88



## CRAIN - LR Series High Wind/Extra Strong Leveling Rods

The LR Standard and LR Pro Series leveling rods have stood up to hard field use for 30 plus years. Strong, waterproof, corrosion-resistant, and nonconductive, the STD and PRO Series leveling rods are the most durable.

### SVR - Surveyor's Leveling Rods

Model	Description	Sections	Collapsed Size	Price
90004	STD 25' 10ths Round	5	70"	\$402.76
90009	STD 25' In Round	5	70"	\$402.76
90022	PRO 25' 10ths Lg Rd	5	70"	\$473.25
90024	PRO 35' 10ths Lg Rd	7	70"	\$700.58
90026	PRO 45' 10ths Lg Rd	9	78 3/4"	\$848.13

## Sokkia SK Rods

Sokkia's patented SK Rods are famous for their accuracy and dependability. Their unique oval shape offers a better stability than other rods, and all graduations are sized for maximum readability. You can count on the quality of the "original oval leveling rods" - Sokkia's SK's are simply the best value available today!

Model	Description	Price
8073-38	SK 25' inches	\$250.95
1005151-01	16' Fiberglass Inches	\$115.50
1005152-01	16' Fiberglass 10ths	\$115.50



## Sokkia Rod Level

Determines quickly and accurately if level rod is plumb. Head is adjustable so that a true level can be maintained at all times.

Model	Price
7241-90	\$19.22

## SECO GPS / Robotic Poles / Accessories

Model	Description	Price
5128-20-GT	2 meter GT Carbon Fiber Snap Lock Rover Rod	\$408.77



Model	Description	Price
5125-20-YEL-GT	2 meter Aluminum Snap Lock Rover Rod - Yellow	\$204.17

Model	Description	Price
5126-10	2 meter GT Carbon Fiber 25mm GPS/GIS Rover Rod	\$544.60



Model	Description	Price
5217-15-ABK	Bipod 12-inch Open Clamp	\$89.43

## All-Terrain Rover Rod "Big Wheel"

The 5125-056 is great for when you need good elevations on jobs including topos, ag fields, volume surveys, site prep and GIS.

Model	Description	Price
SECO 5125-056	All-Terrain Rover Rod	\$395.76
5217-15-ABK	Bipod 12-inch Open Clamp	\$89.43

shown with SECO Quick Release Bipod



## SitePro SureGrip Quick Release Cradles



The SureGrip quick release cradles feature a clamping system that easily secures a data collector / controller without crushing it.

- Anti-crush quick release design locks cradle when tightened
- Plugs directly into quick-release pole clamps
- Easily secures data collector / controller with anti-crush quick release design that locks cradle when tightened
- Durable anodized aluminum design

Model	Description	Price
10-5265	Cradle for TSC3	\$106.50
10-5274	Cradle for Surveyor 2, Allegro 2	\$133.10
10-52139	Cradle for Trimble TSC7	\$158.80

## SitePro Quick Release Clamps

The LR Standard and LR Pro Series leveling rods have stood up to hard field use for 30 plus years. Strong, waterproof, corrosion-resistant, and nonconductive, the STD and PRO Series leveling rods are the most durable.

SVR - Surveyor's Leveling Rods

Model	Description	Price
10-5215	Quick Release Pole Clamp	\$112.90
10-52154	Quick Release Pole Clamp w/ Compass	\$121.00
10-5215x	Pole Clamp w/ Compass & 20 min vial	\$142.60



## Prism Poles and Accessories

### SECO Prism Poles

Model	Description	Price
SECO 5700-10	Adjustable Tip, Dual Grad. 8.5 ft (2.5m) QuickRelease Prism Pole	\$243.77

Model	Description	Price
SECO 5700-20	Adjustable Tip, Dual Grad. 12 ft (3.65m) QuickRelease Prism Pole	\$319.97

Model	Description	Price
SECO 5813-10	QLV Lock, Dual Grad, Fixed Tip 8.53 ft (2.6 m) Telescoping Prism Pole	\$263.17

Model	Description	Price
SECO 5801-10	QLV Lock, Dual Grad. Adjustable Tip, 8.53 ft (2.6 m) Telescoping Prism Pole	\$263.17

Model	Description	Price
SECO 5129-52	TLV Robotic Pole 8.5 ft (2 m)	\$376.61



## SitePro Prism Poles

Model	Description	Price
07-4047	4.7in Handheld mini prism rod	\$105.60



Model	Description	Price
07-4708-TMA-FY	8ft Twist-Lock Prism Pole 10ths / metric	\$205.20

Model	Description	Price
07-4712-TMA-FY	12ft Twist-Lock Prism Pole 10ths / metric	\$274.40



Model	Description	Price
07-4602-TM	8.6ft Carbon Fiber Robotic Pole	\$342.40

## SECO Prism Pole Accessories



This point features a steel body with removable point. Weighs 0.3 lb (0.14 kg)

Model	Description	Price
5194-00	Prism Pole Point Replacement	\$31.09

The SECO Prism Pole Topo Shoe is constructed of high-quality aluminum. It fits most poles. Weighs 0.34 lb (0.15 kg)

Model	Description	Price
5191-00	Prism Pole Topo Shoe	\$27.04



The SECO Wide Base Topo Shoe features a steel body and measures 2.5 in (64 mm) in diameter. Weighs 1.26 lb (0.57 kg)

Model	Description	Price
5192-00	Prism Pole Topo Shoe Wide Base	\$49.61

This innovative tool gives the user an added sense of safety while doing routine surveys in traffic areas.

Model	Description	Price
5001-20	Heads Up Pole Level	\$135.00



This new combo allows easy conversions from "control" to "topo" surveys. The quick-release pin and matched drill holes are the key! Point weighs 0.15 lb (0.07 kg) Topo shoe weighs 0.20 lb (0.09 kg)

Model	Description	Price
5192-02	Prism Pole Point & Topo Shoe Combo	\$101.96

## SECO Bipod and Tripods for Prism Poles

### SECO Prism Pole Mini Bipod Thumb Release

Ideal for robotic systems, the new SECO mini bipod is the same design as our popular #5217-04 bipod. It collapses to 25 inches (63.5 cm) and extends to 35 inches (88.9 cm). Includes the #5217-30 leg clip. Weighs 3.5 lb (1.6 kg).

Model	Description	Price
5217-05-FLY	Prism Pole Mini Bipod Thumb Release	\$247.64



### SECO Prism Pole Bipod Thumb Release

Allows users to simply clamp the pole into place without lifting and threading it through the bipod head. Legs extend to 6 feet (1.8 m) for use in uneven terrain. Collapses to 43 inches (109 cm). Weighs 4 lb (1.8 kg).

Model	Description	Price
5217-04-FLY	Prism Pole Bipod Thumb Release	\$247.64

### SECO Prism Pole Mini Bipod Thumb Release Carbon Fiber

Uses the same design as the popular #5217-04 Bipod above, but weighs only three pounds. Legs extend to six feet (1.8 m) for use in uneven terrain. Collapses to 43 inches (109 cm) and weighs 3 lb (1.36 kg)

Model	Description	Price
5219-03	Prism Pole Mini Bipod Thumb Release Carbon Fiber	\$428.04



### SECO Prism Pole Tripod Thumb Release

SECO Tripods create free-standing GPS antenna poles or prism poles. The legs extend to 6 feet (1.8 meters) for use in rugged terrain. Weighs 5 lb (2.3 kg)

Model	Description	Price
5218-02-FOR	Prism Pole Tripod Thumb Release	\$303.56

### SitePro Thumb Release Pole

Model	Description	Price
07-4630-FY	Thumb Release Pole Bipod, yellow aluminum	\$197.20



### SitePro GPS Antenna Tripod with Spurs

Model	Description	Price
09-100S-FY	GPS Antenna Tripod with Spurs	\$1058.40

## SitePro Quicktip Pole Adapters

Precision machined aircraft aluminum 5/8 - 11 male pole mounting thread. Compatible with the QuickTip series poles and other prism poles with this type of interchangeable design. Adapters length is designed to achieve 150mm target height.

Model	Description	Price
07-2090-100	QuickTip Adapter (Topcon APT1 & APT2) 100mm	\$36.80



Model	Description	Price
07-2090-135A	QuickTip Pole 5/8-11 Adjustable Adapter	\$41.60

Model	Description	Price
07-2090-15	QuickTip Pole Adapter for Trimble RMT Adjustable	\$19.60



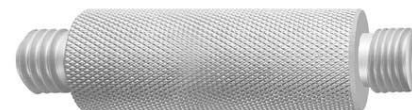
Model	Description	Price
07-2090-150	QuickTip Pole Adapter GNSS Antenna	\$39.30

Model	Description	Price
07-2090-35	QuickTip Pole Adapter for 1010 & 1020 Series	\$21.90



Model	Description	Price
07-2090-50	QuickTip Pole Adapter for GPH1	\$21.90

Model	Description	Price
07-2090-50A	QuickTip Pole Adapter for Zeiss 360 Prism	\$21.90



Model	Description	Price
07-2090-73	QuickTip Pole Adapter for Topcon 360 Prisms	\$26.50



## SECO 62mm Strobe Prism Assembly

This assembly combines the popular SECO Premier target and holder with a strobe prism. It's perfect for low light conditions like tunneling, mining, or forestry applications - the strobe is also useful in conditions where the target may be hard to see due to background light. The 62mm silver-coated strobe prism flashes approximately every 1/2 second and features an easy on/off button on the canister.

- Use -30mm or 0 offset
- The height of the tilting axis is 115 mm
- The prism uses a standard Sanyo CR-1/3N camera battery for approx 24 hours of use
- The assembly uses standard 5/8 x 11 female mounting
- Weighs 1.35 lb

Model	Description	Price
6402-03-FOB	62mm Strobe Prism Assembly (White & Orange)	\$333.54



## SECO Mini-Stakeout Prism Kit

The popular SECO stakeout prism is now in "kit form, which allows you to handle several surveying tasks from topos, stakeout, and construction handheld applications. The white site cones on X and Y axis help improve centering of your instrument crosshairs for vertical and horizontal pointing. The horizontal site cones double as tilting axis locks.

- Heavy-duty white point can handle abuse & can be used as hand held as well
- 115 mm for use with most standard prism poles. 40 minute circular vial mounted
- Four height configurations: 50,100, 115 and 150 mm, top or bottom of the pole, handheld or tribrach mounted
- 25mm copper-coated prism is moisture-resistant & has a 3000-4000ft range
- Kit features Zero or 30mm prism offset positions
- Comes with padded carrying case. Weighs 0.8 lbs (0.36 kg), 1.3 lbs (0.59 kg) w HD pt

Model	Description	Price
6405-11-FOR	62mm Strobe Prism Assembly (White & Orange)	\$389.18



## SECO 25mm Mini Prism System w/ side vial

Here's a versatile prism system in a small package! It's the same as the economical 6200-10-XXX but the vial is located on the side. The assembly features a 25 mm copper-coated prism for fog prevention, a tilt holder with friction access, zero or -30mm offset.

It's powder painted a fluorescent orange or yellow with fluorescent yellow targets and includes a 40-min adjustable circular vial on the side. This assembly can be prism pole or tribrach mounted at three heights: 70mm, 100mm or 115mm and can be handheld using the plumb bob bracket or with S-hook for a quick attachment to the plumb bob.

Includes a point for stake-out work, a system bag with belt loop. Weighs 0.34 lb

Model	Description	Price
6200-11-FOR	Fluorescent Orange 25mm Mini Prism System	\$186.12



## SECO Single Prism Tilting Assembly

This -30 mm offset prism holder is constructed from a durable aluminum and is sealed with a rugged corrosion-proof electrostatic powder paint coating.

- Includes copper-coated (#6411-02-BLK) prism
- Weighs 1.5 lb

Model	Description	Price
6440-00-FOR	Fluorescent Orange Single Prism Tilting Assembly	\$315.65



## SitePro Single Prism Assembly All-Metal Orange

This 0-30 mm constant prism system is an all-metal holder and target with a weather-proof sealed 2-1/2in (62.5 mm) precise prism. Featuring an aluminum tension adjusting knob this item is universal with leading manufacturers and has a 5/8-11 bayonet adapter

Model	Description	Price
03-1010-O	SitePro Single Prism Assembly All-Metal Orange	\$190.10



## Carlson 360 Prism

Suitable for all robotic TPS work performed with a survey pole. Large rubber mountings protect the prism. Overall 3D pointing accuracy of 5.0mm. When aiming on a side marked by a yellow arrow, an accuracy of better than 2.0mm can be achieved. ATR range of 600m (2000 ft).

Model	Description	Price
8040.054.032	Carlson 360 Prism	\$1,370.00

## SitePro 360 Degree Prism Set

The SitePro 360 degree professional reflector system is compatible with Leica instruments and offsets. Position reflector directly on a survey mark at the height of 78 mm. Target tracking range up to 2,000 ft (600m).

Model	Description	Price
03-2360	SitePro 360 Degree Prism Set	\$1,407.60



# Bags and Cases

## SECO Backpack for Robotics Equipment

Designed specifically for robotics, the pack features a double-zipped top loading station compartment lined with rigid foam padding, two side pockets for cables, and one battery pocket.

- Top Velcro rain flap closure and rain flaps on the side pockets
- Free-standing aluminum frame keeps the pack upright even when fully loaded
- Comfortable padded belt with new lumbar back support system, shoulder straps with all-point adjustment features, and a rubberized carrying strap
- 1 3/8" yellow retroreflective stripes on all sides
- Weighs 8 lb and holds 40 lbs (18.14 kg)
- Interior Dimensions: 17 x 10 x 10 in (43.18 x 25.4 x 25.4 cm)
- Exterior Dimensions: 24.5 x 15 x 16 in (62.2 x 38.1 x 40.6 cm)

Model	Description	Price
8134-00-ORG	SECO Backpack for Robotics Equipment	\$596.54



## SECO Extra Long Bag for Stakes and Hubs

The SECO stake bag features outside pockets for holding tools and supplies and an adjustable shoulder strap. Can carry 24in wood stakes with partition to separate hubs.

Model	Description	Price
8096-20-ORG	Extra Long Bag for Stakes & Hubs	\$122.94





## SECO Flagging Dispenser

The SECO flagging dispenser holds four rolls of flagging tape. The belt strap allows the flagging dispenser to be carried around the waist or over the shoulder

Model	Description	Price
8025-00-ORG	SECO Flagging Dispenser	\$37.52

## SECO Heavy Duty Rhinotek Bag for 18in and 24in Stakes

The SECO fstake bag is similar to the popular #8090-00-XXX in every way but one. This new bag is built with super-tough Rhinotek™. The main compartment is constructed of Rhinotek™ and the five large outer pockets are 1000 denier Cordura® so you know this bag is built to last. This bag holds 18in (45.72 cm) stakes or rebar. Other features include: a hammer loop, an adjustable shoulder strap, and brass grommet drain holes at both ends of the bag.

Model	Description	Price
8090-20-ORG	Orange Heavy Duty Rhinotek Bag for 18in Stakes	\$85.05
8092-20-ORG	Orange Heavy Duty Rhinotek Bag for 24in Stakes	\$96.08



## SECO Heavy Duty Rhinotek Bag for 36in and 48in Lath

The #8100-20-ORG is the same as the popular SECO #8100-00 Lath Bag with the addition of abrasion-resistant Rhinotek™ material. The bottom of the bag and 6in up the side are constructed of 100% Rhinotek™. The bag holds 36in (91.44 cm) lath and features a sturdy, adjustable shoulder strap and hand loop to carry the load. It also features three (3) 8in x 10in (20.32cm x 25.40cm) pleated outside pockets for paint, markers, etc. Inside dimension is 8in x 33in (20.32cm x 83.82cm)

Model	Description	Price
8100-20-ORG	Orange Heavy Duty Rhinotek Bag for 36in Lath	\$75.41
8101-20-ORG	Orange Heavy Duty Rhinotek Bag for 48in Lath	\$91.27

## SECO Heavy Duty 2 meter Snap-Lock Pole System Bag

This new bag holds the 2 meter Snap-Lock Pole with a bipod or tripod connected. It is constructed of tough Cordura® material and Rhinotek™ ends. A full length #10 zipper, duel hand-carry straps, full-length shoulder strap and a side pocket. Measures 5.5in I.D. x 55in (13.97cm I.D. x 139.7cm) and weighs 1.5lbs (.68 kg)

Model	Description	Price
8151-02-FLY	Yellow Heavy Duty 2 m Snap-Lock Pole System Bag	\$112.00



Model	Description	Price
8080-00-ORG	SECO Prism Bag for Triple Prism Assembly	\$60.05

Model	Description	Price
8180-20-ORG	SECO Prism Pole Tripod Bag	\$88.69



Model	Description	Price
91411	CRAIN case for CR Leveling Rod 13'/16'/20'	\$29.54



## Sokkia TR-112 Tribrach with Optical Plummet, Standard

These tribrachs accept Sokkia EDM systems, electronic and optical theodolites as well as equipment and accessories. The base plate has a standard 5/8in x 11in threads and circular level vial with a sensitivity of 10'/2mm push-pull slide focus.

Model	Description	Price
307796007-sursk	WOA Precision Tribrach w/ Optical Plummet	\$432.60
724034	WOA Precision Tribrach w/ Laser Plummet	\$208.95



## SitePro Tribrach with Optical Plummet (Black)

- Smooth locking mechanism with secure motion foot screws
- Precise alignment of support cavity to the base plate assures accurate centering of instrument
- Optical plummet 0.5 - 15m focus
- Durable to endure most weather conditions

Model	Description	Price
05-1200-B	SitePro Tribrach with Optical Plummet (Black)	\$249.70

## SitePro Tribrach without Optical Plummet (Black)

- Smooth locking mechanism with secure motion foot screws
- Precise alignment of support cavity to the base plate assures accurate centering of instrument
- Durable to endure most weather conditions

Model	Description	Price
05-1201-B	SitePro Tribrach without Optical Plummet (Black)	\$140.40



## SitePro Tribrach with Laser Plummet (Black)

- Smooth locking mechanism with secure motion foot screws
- Precise alignment of support cavity to the base plate assures accurate centering of instrument
- Laser plummet 0.5 - 15m focus
- Durable to endure most weather conditions
- Swiss Style

Model	Description	Price
05-1300-B	SitePro Tribrach with Laser Plummet (Black)	\$223.60

## Tribrach Adaptors

### SECO Prism H.T. Adaptor

The SECO Prism adaptor allows adjustment of the prism height by moving the threaded brass insert in the adaptor. It fits all standard tribrachs and allows 2in (51 mm) of adjustment.

Weights 1.91lb (0.87 kg)

Model	Description	Price
2071-00	SECO Prism H.T. Adaptor	\$136.24





## SitePro Friction Type Rotating Tribrach Adapter

- Anodized black aluminum
- 5/8 - 11 brass thread mounting
- Anodized aluminum mounting studs

Model	Description	Price
05-2521	SitePro Friction Type Rotating Tribrach Adapter	\$82.70

## SitePro Zeiss/Wild Type Rotating Tribrach Adapter - Adjustable

- Anodized black aluminum
- 5/8 - 11 brass thread mounting
- Anodized aluminum mounting studs

Model	Description	Price
05-2525	SitePro Zeiss/Wild Type Rotating Tribrach Adapter	\$88.60



## SitePro Traverse Tribrach Adapter with Optical Plummet

- Rotates 360 degrees
- 60 second adjustable plate vial
- Adjustable height 100mm - 120mm

Model	Description	Price
05-3511	SitePro Traverse Tribrach Adapter Optical Plummet	\$299.20

# Plumb Bobs and Accessories

## Plumb Bobs

- Screw caps and hardened steel points with standard threads
- Storage space for extra point inside cap
- Made to U.S. government specifications

Model	Description	Price
6000-012	12oz Plumb Bob	\$28.07
6000-014	14oz Plumb Bob	\$31.43
6000-016	16oz Plumb Bob	\$32.86
6000-018	18oz Plumb Bob	\$35.73
6000-024	24oz Plumb Bob	\$44.94
6000-032	32oz Plumb Bob	\$53.63



## Leather Scabbards for Plumb Bobs

- Extra heavy stitching and a riveted pocket

Model	Description	Price
6000-120	Scabbard for 10 - 12 oz bobs	\$15.54
6000-160	Scabbard for 14 - 18 oz bobs	\$15.24
6000-240	Scabbard for 18 - 32 oz bobs	\$15.24

## Leather Scabbard for Gammon Reel and Plumb Bob

- Rugged leather with stitched and riveted pockets. Holds tape or Gammon Reel and 16 or 18 oz plumb bob

Model	Description	Price
8123-65	Leather Scabbard for Gammon Reel & Plumb Bob	\$15.65



## Plumb Bob Cord

- Plumb bob cord 50 yd length

Model	Description	Price
8124-13	Plumb Bob Cord	\$11.97

## Gammon Reel

Eliminates string troubles; no knots needed for instrument setup. Attaches to plumb bob. Provides instant rewind of plumb bob string, up and down adjustment, and a target on the reel. Comes equipped with choice of 6.5 or 12ft of 72lb test orange nylon string. String refills are available.

Model	Description	Price
812450	6.5ft Gammon Reel (red/white target)	\$18.06
812449	12ft Gammon Reel (red/white target)	\$24.05
812448	12ft Gammon Reel (orange/black target)	\$24.05



# Measuring Wheels

## Rolatape® Professional Series Measuring Wheels - Robert Bosch Tool Group

Professionals in many fields count on the Rolatape Professional Series to provide reliable measuring under the toughest conditions. Featuring all steel construction, a 5-digit ratchet counter, calibrated wide rubber tires and safety-glo powder coating, the Professional Series has set the standard of quality, accuracy and dependability since 1950.



MM12

Model	Description	Price
RT104	4in diameter (measures ft & in up to 1,000 ft)	\$51.44

Model	Description	Price
RT204	4in diameter (measures ft & in up to 1,000 ft)	\$58.22

MM12 Twin



300

Model	Description	Price
32-300RP	11 1/4in diameter (meas. ft & in up to 100,000 ft)	\$156.22

Model	Description	Price
32-400	15 1/2in diameter - measures in feet up to 100,000	\$221.14

400



415

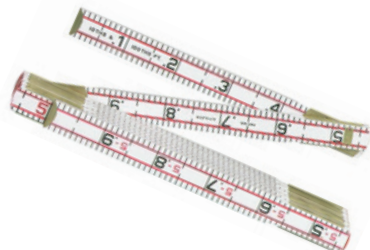
Model	Description	Price
32-415	15 1/2in dia (meas. ft/in/10ths up to 100,000 ft)	\$229.86



## Rhino Ruler Waterproof Fiberglass Folding Ruler

The waterproof fiberglass construction prevents common problems that occur with wood rulers such as fading, splintering, and chipping. It outlasts wood rulers 4 to 1. Engraved graduations resist weather and scratches. Easy-to-fold locking joints are tighter than traditional folding rulers made of wood. This allows more accurate measurement along the length of the ruler.

Model	Description	Price
4770-00*	6ft - Engineer's Rule - 10ths / Inches	\$28.53
4770-01	6ft - Engineer's Rule - 10ths / Metric	\$27.78



## Lufkin Measuring Tapes

Model	Dimensions	Description	Price
062CME	6ft / 2m	ft / in / 16ths / metric	\$11.40
1066D*	6ft	ft / 10ths / 100ths / in / 16ths	\$29.80
1066DM	6ft	ft / 10ths / metric	\$29.80

## Lufkin Pocket Tapes

Model	Description	Price
HV1425*	1in x 25ft Hi-Viz Orange Series 1000 Power Tape ins	\$19.12
HV1425D*	1in x 25ft Hi-Viz Orange Series 1000 Pwr Tape 10ths	\$19.04
XL8525	Extra Wide 10ft Standout Hi-Viz Orange ft / in	\$20.08
XL8525D	Extra Wide 10ft Standout Hi-Viz Orange ft / 10ths	\$20.08
2133D	1in x 33ft Series 2000 Power Return Tape	\$42.06



## Keson Ultra-Glass Fiberglass Tape Measure Open Type Reel

The tough molded handle is easy to grasp and the crank handle is reinforced with metal for years of rugged use. Double throat rollers guide the blade return and prevent the tape from twisting. The award winning shovel handle is ideal for rapid reeling. Printed on one side in feet, 10ths, and 100ths of a foot.

Model	Description	Price
OTR-10-100	100 feet	\$30.95
OTR-10-200	200 feet	\$66.20
OTR-10-300	300 feet	\$85.05

## Keson Perma Clad™ Nylon Coated Steel Tape Measures

Less wind drift and improved flexibility, these nylon coated steel tapes bend easily to curved surfaces and are lightweight, even in the 200ft length. They are constructed to be highly break and damage resistant under the toughest field conditions.

Model	Dimensions	Description	Price
NR-10-100E	100 feet	10ths / 100ths	\$86.95
NR-10-200E	200 feet	10ths / 100ths	\$130.40





## Leather Tool Pouch

- Features 8in x 7in pouch for field books, etc. plus 6in x 4in pouch for spikes, nails, etc. Storage slot for crayons, markers, concrete drill or other tools. Leather loop for hammer, axe, or steel tape. A 12ft pocket tape may also be clipped over the leather loop.

Model	Description	Price
8181-15	Leather Tool Pouch	\$36.02
8123-50	Web Belt - Adjusts to fit 29in - 46in waist	\$7.93

## Surveyor's 7-pocket Tool Pouch

- Specially designed, all-leather pouch for the working surveyor

Model	Description	Price
8181-16	Surveyor's 7-Pocket Tool Pouch	\$38.43

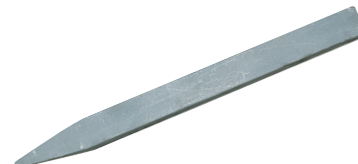


## Engineering Hammer

Model	Description	Price
4430915	4lb Eng Hammer with 16" Wood Handle	\$21.75

## Gad

Model	Description	Price
17-GAD18	3/4" x 1 3/4" x 18" Rectangular Gad	\$44.90



## Machete and Machete Sheath

Model	Description	Price
442P-MA22	22in Machete	\$18.05
44MA22-SHEATH	22" Leather sheath with belt loop	\$24.50

## ChrisNik Manhole Cover Pick

Model	Description	Price
4432FH	Manhole Cover Pick, Flat Head Tip	\$45.45



## Bush Hook

Model	Description	Price
8130-10	3lb 11in red-painted steel blade with 36in hickory handle	\$70.00
8130-11	Replacement Handle for Bush Hook	\$18.30



## Sokkia Transit and Economy Field Books

- Left Page: blue horizontal lines and red vertical lines
- Right Page: 8 vertical and 4 horizontal blue lines, red vertical center line
- Size: 4 1/2in x 7 1/4in

Model	Description	Price
8152-05	Economy Book - spiral bound, 36pp, heavy cover	\$15.75
8152-10*	Economy Book - saddle stitched, 32pp, heavy cover	\$4.94

Model	Description	Price
8152-75	Cross Section Field Book - 6.5in x 8.5in - 10 sq/in	\$14.90



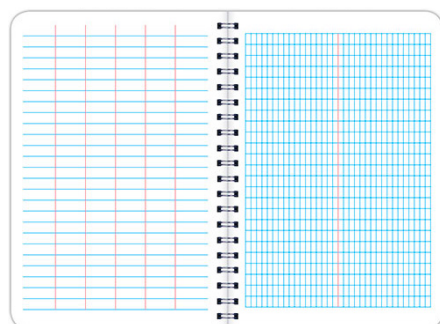
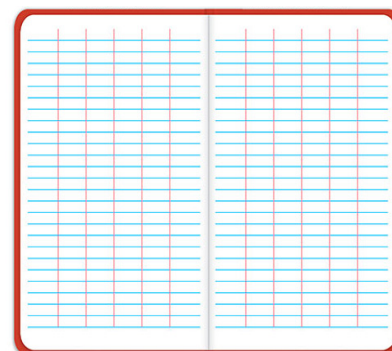
## ELAN Field Book 64 - 8 x 4



- Orange fabric hardback
- 50% cotton-content paper
- Water resistant surface
- 80 Sheets

Model	Description	Price
E64-8x4*	4in x 8in (1 book)	\$10.80
E64-8x4S	4in x 8in (6 books)	\$6.00 per
E64-8x4K	6in x 9in (6 books)	\$16.74 per

Model	Description	Price
E64-4x4	4 5/8 in x 7 1/4 in (1 book)	\$4.68



Model	Description	Price
E64-8x4W	4 3/4in x 7 1/4 in (1 wire bound book)	\$2.81 per



# BRANDED SAFETY GEAR

We make it easy to get the safety gear and apparel you need, when you need it. Select from our diverse, completely customizable collection to equip your team and help promote your business on the job site.

For more information, visit:

[www.printostat.com/custom-apparel](http://www.printostat.com/custom-apparel)



Tees, Polos & Sweatshirts



Vests



Coats & Jackets



Caps & Hard Hats



Overalls & Coveralls



Gloves





### High Visibility Value Two-Tone Surveyor Solid Vest

- 2in silver reflective tape backed by contrasting ANSI compliant trim
- 100% ANSI Polyester Tricot
- Large arm opening for over cold weather outerwear
- 2 Mic Tabs
- Pockets: Double left chest with 4 pencil compartments, right chest radio/ phone with Hook & Loop Flap, 2 Lower Front with Flap (hook & loop closure), 2 Lower Inside and 1 Inside Flashlight
- ANSI / ISEA 107-2015 Class 2

Model	Description	Price
ECO-ATRANS	High Vis Value 2-tone Surveyor Solid Vest	\$12.98

### Sokkia Hard Hats

High-density polymer for excellent protection against severe impact. Molded in one piece with no metal, protecting against corrosive materials. Meets ANSI Z89, 1-196 (Class A) - Federal Spec GGG-H-14t2g. Fits sizes 6 3/8 through 8. Weight: 11oz.

Model	Description	Price
8136-30	Sokkia Hard Hat - Yellow	\$16.80
8136-31	Sokkia Hard Hat - White	\$16.80



### Traffic Cones

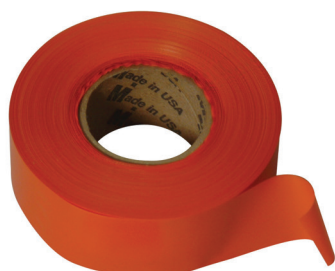
These high-intensity fluorescent red-orange traffic cones are made of polyvinyl chloride (PVC) for strength and durability. Weighted base for good stability and bubble reflected by first surface mirror for maximum illumination.

Model	Description	Price
401850-00-M	18in Traffic Cone	\$16.77
8136-19	28in Traffic Cone	\$18.06

### Caution Tape

A staple item for any work site, this caution tape ensures superior safety in even the harshest of environments. Perfect for construction and industrial applications, stock up on this tape so you are always prepared to alert people of potential danger.

Model	Description	Price
8110-50	3mil 1000ft Yellow Caution Tape	\$14.39



### Texas Brand Flagging

- Roll Width: 1 3/16in, Length: 150 ft
- Non-Toxic, Non-Flammable
- Texas-shaped embossing, superior weathering, temperature resistance: -20° F
- Colors: Glo & Flat colors available. Contact Us for colors. Reference color when ordering

Model	Description	Price
Texas Flagging	Box of 12	\$35.00
Texas Flagging	Case of 144	\$400.00



## Aervoe Marking Paint



### FLUORESCENT PAINT COLORS

- 220 - Fluorescent Red
- 222 - Fluorescent Orange
- 224 - Fluorescent Green
- 226 - Fluorescent Yellow
- 227 - Fluorescent Blue
- 229 - Fluorescent Pink

### APWA UTILITY PAINT COLORS

- 200 - Clear Spray
- 201 - Red (street lighting, electrical)
- 202 - Yellow (gas and oil)
- 203 - Blue (water)
- 204 - Green (drain and sewer)
- 205 - Orange (communications)

### APWA UTILITY PAINT COLORS

- 206 - Black Spray Chalk
- 207 - White (regular)
- 214 - Blue Spray Chalk
- 215 - White Spray Chalk
- 216 - Red Spray Chalk
- 218 - Yellow Spray Chalk

### FEATURES

- Aervoe Survey Marking Paint is the best marking paint of its kind
- Packaged in a can that is operated only in an upside down position
- Provides exceptional quality in terms of initial color brightness, color retention, adhesion, durability and color consistency
- Formulated with superior quality raw materials to meet the requirements of the most demanding professional
- Although the optimum operating temperature range is 50°F to 90°F (10°C to 30°C), the product contains a freeze point depressant which will allow it to function with a reduced delivery rate down to 15° (-10C)

### BENEFITS

- Colors meet standards set by OSHA and APWA/One Call Systems
- Not affected by moisture or water and will not wash away once dry
- May be used with the cap on in Aervoe applicators #244/245. Spray through cap eliminates accidental discharge
- Each can is non-clogging and empties completely
- Regular colors will last up to 6 months and fluorescent colors will last 3 to 6 months depending on traffic and exposure
- Designed to adhere to most surfaces including pavement, gravel & soil. Ideal for use in surveying & other long term apps.

**\$7.53 per can**

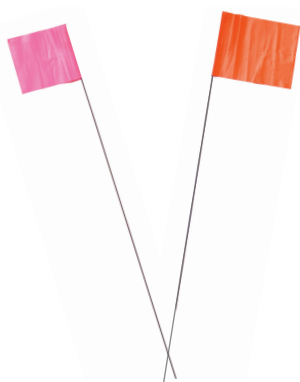
**\$80.00 per case (12 cans)**

## Quik Stakes®

- Replaces heavy wooden stake
- No need for paint or flagging
- Can last up to five (5) years
- Galvanized metal rods easily located with metal detector
- 100 stakes weigh only 10.5lbs, 20in long with 1 1/2in x 10in flag
- Available in 8 utility colors
- Save time, money and your back with these stakes
- Colors: green, blue, orange, white, yellow, pink, brown. Reference color when ordering



Model	Description	Price
Quik Stakes	Box of 100	\$50.00



## Stake Flags

- 2 1/2in x 3 1/2in flag size
- Bright vinyl flags securely attached to stiff steel wire stakes
- 100 per bundle, 10 bundles per box, sold by the box
- Colors: pink glo, orange glo, blue, yellow

Model	Description	Price
2 x 3 x 21	21in Stake	\$12 / bundle
2 x 3 x 24	24in Stake	\$12.50 / bundle
2 x 3 x 30	30in Stake	\$14.00 / bundle

## Stake Whiskers

- Packed 25 per bundle
- Colors: orange, yellow, green, red, blue, purple, pink glo and white

Model	Description	Price
W6*	Stake Whiskers	\$4.75



## Dixon Lumber Crayons

- For marking lumber, steel, concrete and most rough surfaces
- Water, fade and smear resistant
- Colors: Red (520)\*, Dixon Blue (521), White (523), Pink (492)\*, Black (494) & Yellow (496)\*

Model	Description	Price
12 / box	Dixon Lumber Crayons	\$10.00 / box



## Dixon RediMark

Excellent durability! 6in metal barrel permanent marker can not crack, melt or break. Leak-proof, seamless, metal body, heavy-duty chisel felt tip with anchored nib construction. Marks on wood, metal, and more. Fast drying, fade resistant, permanent ink. AP certified non-toxic and made in the U.S.A.

Model	Description	Price
8717*	Dixon RediMark - Black - dozen	\$33.00 / box
8711	Dixon RediMark - Red - dozen	\$33.00 / box



## Mag Nails

- Find it further. More Durable
- Larger center point. Reclosable locking box
- Zinc and clear chromate coated to resist corrosion



Model	Description	Price
750-MAGNAIL*	Box of 100 - 3/4in x 1/8in	\$10.62/ box
1000-MAGNAIL*	Box of 100 - 1in x 5/32in	\$12.57 / box
1250-MAGNAIL*	Box of 100 - 1 1/4in x 3/16in	\$18.40 / box
1500-MAGNAIL*	Box of 100 - 1 1/2in x 1/4in	\$25.77/ box
2000-MAGNAIL*	Box of 100 - 2in x 1/4in	\$33.16 / box
2500-MAGNAIL*	Box of 100 - 2 1/2in x 1/4in	\$37.09 / box



## Stake Tacks

- 3/4in long steel stake tacks with bright finish
- Identification in head to guide pluim bob point
- Approximately 725 tacks per box



Model	Description	Price
14*	Stake Tacks	\$16.72

## Rebar Caps



Contact us for pricing

Model	Description	Colors	Characters
3000	Fits into 1/2in pipe over 3/8in rebar	Y, R, O	7 on 2 lines
4000	Fits into 3/4in pipe over 1/2in rebar	Y, R, O, P	9 on 2 lines
5000	Fits into 1in pipe over 5/8in rebar	Y, R, O, P	13 on 2 lines
6000	Fits into 1 1/2in pipe over 3/4in rebar	Y, R, O	15 on 2 lines

## Dixon Lumber Crayon (Keel) Holder

- Fits round or hexagonal crayons / markers
- 1/2in in diameter, polished walnut handle
- Metal chuck with hole for wrist strap



Model	Description	Price
8134-68	Dixon Lumber Crayon Holder	\$7.58

## Flat Survey Markers

- Cast from Solid Brass
- Ribbed shank prevents turning or loosening
- Non-glare finish with 1/8in thick top
- Shank area 0.4 sq. in. and length 2in



Model	Description	Price
8134-00	1 3/8in Top Diameter	\$7.22
8134-06	2 1/2in Top Diameter	\$7.78
8134-08	3in Top Diameter	\$9.61

## Flat Survey Markers

- Cast from Solid Brass with curved heads
- Ribbed shank prevents turning or loosening
- Shank area 0.4 sq. in. and length 2in

Model	Description	Price
8134-10	1 3/8in Top Diameter	\$7.22
8134-13	2in Top Diameter	\$8.36
8134-16	2 1/2in Top Diameter	\$8.36



## Nail Markers



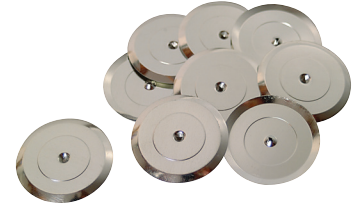
- One Inch Squares
- Made of plastic impregnated nylon in fluorescent orange
- Approximately 70 per package

Model	Description	Price
8115-01	With 1/4in Holes	\$2.53
8115-02	With 1/8in Holes	\$2.53

## Surveyor's Flat Shiners

- Made of Tin
- 2 1/4in diameter with center punch & crimped edges
- Especially valuable for indicating semi-permanent points with spikes or nails
- Three pound carton (approximately 250 count)

Model	Description	Price
2181-00	Surveyor's Flat Shiners	\$60.14



## Surveyor's Raised Shiners



- Made of Tin
- 1 5/16in diameter with raised 1 1/8in center
- Especially valuable for indicating semi-permanent points with spikes or nails
- One pound carton (approximately 260 count)

Model	Description	Price
2182-00	Surveyor's Raised Shiners	\$45.07

# Magnetic Locators

## Schonstedt The Maggie Magnetic Locator

- Metered Magnetic Locators
- Highest Sensitivity, Ergonomic and Durable
- Dust and Water Resistant (Rated IP54)
- Easy Access and Battery Removal
- Expanding bar graph indicates polarity (positive or negative) & relative signal strength
- HeliFlux® sensors
- Modular construction and high performance components
- Includes soft case & sling for ease of carrying through rough terrain, hands free



[Call for Pricing](#)

## Schonstedt GA-92XTD

Time to move to the Schonstedt XT, the greatest innovation in magnetic locating since the celebrated "yellow stick." In its holster, the XT leaves both hands free on the way to the job site, then gives you the freedom to do your best work, single-handed! You've never seen a magnetic locator like the XT, and once you use it, you'll never use another.

- One hand operation
- Operates in both retracted and extended modes
- Fingertip control of volume and sensitivity
- Quick change battery compartment
- Battery Indicator



[Call for Pricing](#)



## Scale Master Pro XE - Advanced Digital Plan Measure

Dual LCD displays and improved ergonomic design make it easier for left or right-handed use. Optional PC interface lets you transfer measurements quickly and accurately to spreadsheets and estimating programs.

- Complete takeoffs from blueprints and plans with speed and accuracy
- Reduce errors on estimates and bids
- Optional Plug-and-Play PC Interface
- 91 Built-In scales support Imperial and Metric
- 10 Custom Scales for out-of-scale drawings

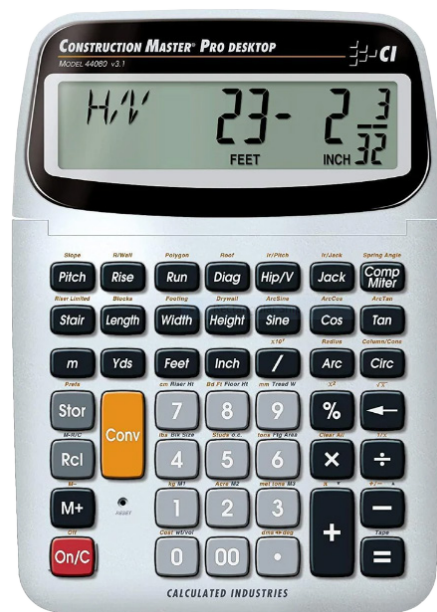
Model	Description	Price
6135*	Scale Master Pro XE	\$109.95

## Construction Master Pro - Advanced Ft-In Fraction Construction Calculator

The Construction Master Pro's built-in solutions and preference selections set the industry standard for construction-math calculations. Excellent for contractors, engineers, architects, designers and building pros. Work in yards, feet, inches, fractions, decimal feet and metric.

- Complete takeoffs from blueprints and plans with speed and accuracy
- Reduce errors on estimates and bids
- Optional Plug-and-Play PC Interface
- 91 Built-In scales support Imperial and Metric
- 10 Custom Scales for out-of-scale drawings

Model	Description	Price
4065*	Construction Master Pro Calculator	\$74.95



## Construction Master Pro Desktop Calculator

Large keys and a jumbo LCD display with tilt head make the Construction Master Pro Desktop Calculator perfect for office use. Includes all features from the hand held model plus full trigonometric function.

- Work in and convert between building dimensions
- Quickly calculate area and volume
- Built-in right angle solutions for stairs, roof, rafters and framing
- Circular calculations: arcs, circumference, segments

Model	Description	Price
44080	Construction Master Pro Desktop Calculator	\$89.95



# MAKE YOUR **MARK** ON THE JOB SITE



In the field and in the office, Print-O-Stat is your graphics source:  
For Safety  
For Communication  
For Branding

## A few of our products and services include:

- Project boards, both dry erase and magnetic
- Directional signage & wayfinding
- Site signs
- Fence wrap and banners, both vinyl and mesh
- Permanent and removable building signs
- Window wraps and decals
- Vehicle wraps, lettering and magnets
- ID Badges
- Design services and installation



Construction site safety messages



Branded Yard Signs With Stakes



Indoor/Outdoor Post & Panel Signs



Development Boards - single or multi-dimensional



Vehicle wraps, decals, lettering, and magnets

Get started by contacting our Signs & Graphics specialists through phone 1.800.711.8014, email [signsandgraphics@printostat.com](mailto:signsandgraphics@printostat.com), or online at [printostat.com](http://printostat.com).



# Contact Us!



## PRINT-O-STAT

### ALLENTOWN, PA

1045 Union Boulevard  
Allentown, PA 18109

### HEADQUARTERS

1128 Roosevelt Avenue  
Suite 100  
York, PA 17404

### CHANTILLY, VA

14301 Sullyfield Circle,  
Suite A  
Chantilly, VA 20151

### COCKEYSVILLE, MD

10540 York Road  
Suite I  
Cockeysville, MD 21030

### CRANBERRY TOWNSHIP, PA

230 Executive Drive  
Suite 108  
Cranberry Twp, PA 16066

### LINTHICUM, MD

811 Pinnacle Drive  
Suites A-B  
Linthicum, MD 21090

### EAST YORK, PA

2300 East Market Street  
East York, PA 17402

### HANOVER, PA

707 Third Street  
Hanover, PA 17331

### LANCASTER, PA

1741 Rohrerstown Road  
Lancaster, PA 17601

### KING OF PRUSSIA, PA

489 Shoemaker Road  
Suite 109  
King of Prussia, PA 19406

### MECHANICSBURG, PA

5040 Louise Drive  
Suite 110  
Mechanicsburg, PA 17055

STAY UP  
TO DATE



@Print-O-Stat, Inc.



@printostat



@PrintOStatInc



@PrintOStatInc



printostat.com/  
latest-news



SURVEY@PRINTOSTAT.COM



WWW.PRINTOSTAT.COM



1-800-811-9889